

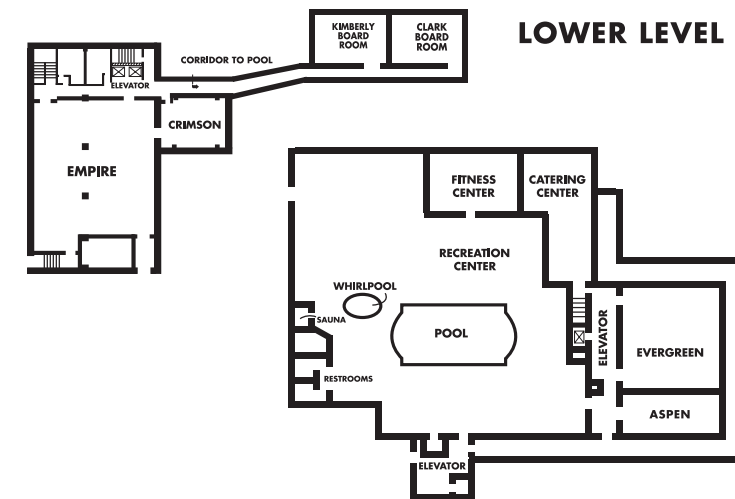
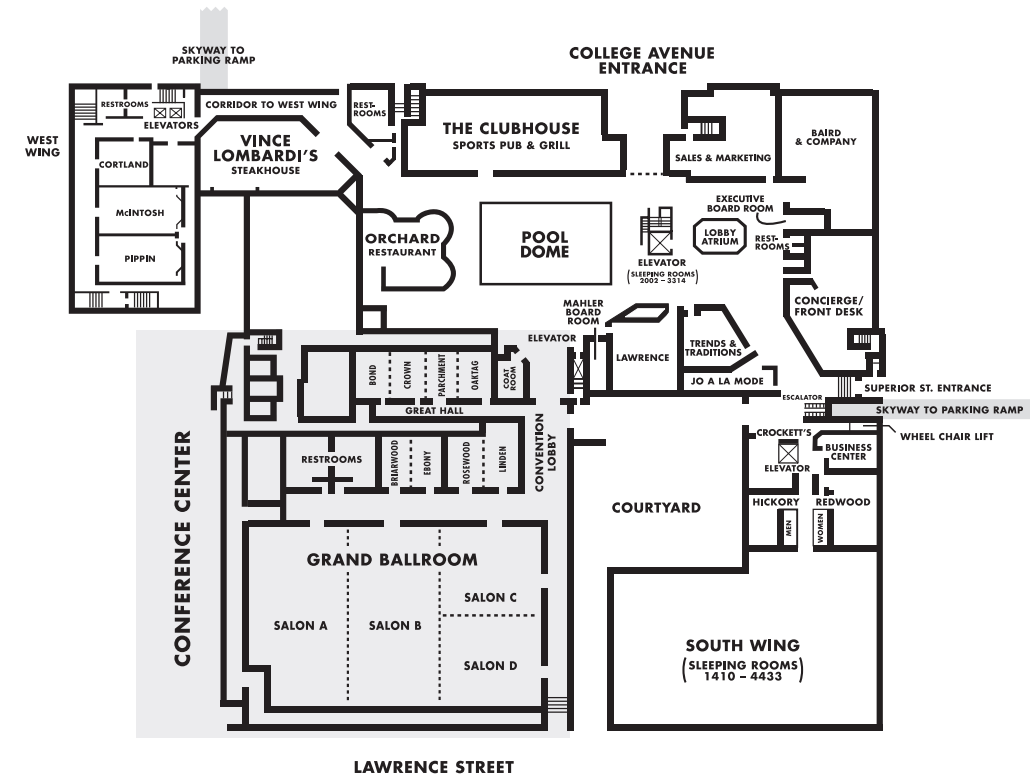


333 W. College Avenue
 Appleton, Wisconsin 54911
 (920) 733-8000
 (800) 242-3499
www.radissonpapervalley.com

- Guest rooms: 395
- Total square feet of meeting space: 37,000
- 26 attractive meeting rooms providing 37,000 square feet of flexible meeting and conference space
- 395 beautifully appointed guestrooms, including 52 on our exclusive Concierge Plaza
- 5 unique restaurants: the legendary Vince Lombardi's Steakhouse, The Orchard, Clubhouse Sports Pub & Grill, Intermezzo, our new island-themed restaurant, and Jo ala Mode serving Starbucks coffee and other delights
- Located in the heart of downtown Appleton's vibrant leisure and entertainment district
- An experienced Sales, Catering and Convention Services team, including 3 Certified Meeting Professionals
- Full service features including indoor pool, whirlpool and fitness center; complimentary business center; and in-room dining

Room Name	Length (Feet)	Width (Feet)	Square Feet	Ceiling Height	Banquet Rounds	Theater Seating	Classroom Seating	Conference Seating	U-Shaped Seating	8' x 10' Exhibits
Grand Ballroom	93'	150'	13730'	13'	1200	1750	900	N/A	N/A	90
Salon (A)	93'	50'	4430'	13'	350	400	260	N/A	N/A	28
Salon (B)	93'	50'	4650'	13'	380	465	300	N/A	N/A	30
Salon (CD)	93'	50'	4650'	13'	350	465	300	N/A	N/A	29
Salon (C)	45'	50'	2250'	13'	180	250	140	72	56	12
Salon (D)	48'	50'	2400'	13'	180	240	150	72	56	12
CONFERENCE ROOMS										
Briarwood (A)	29'	16'	464'	11'	30	40	24	24	24	2
Ebony (B)	29'	16'	464'	11'	30	40	24	24	24	2
AB	29'	32'	928'	11'	70	85	48	40	36	4
Rosewood (C)	29'	19'	551'	11'	40	50	32	24	24	2
Linden Room (D)	37'	19'	703'	11'	50	60	44	32	28	3
CD	29'	38'	1254'	11'	100	110	72	52	38	5
Great Hall	26'	70'	1820'	11'	160	180	100	72	64	14
Oaktag (A)	26'	17'	442'	11'	40	45	24	25	24	N/A
Parchment (B)	26'	18'	468'	11'	40	45	24	25	24	N/A
Crown (C)	26'	17'	442'	11'	40	45	24	25	24	N/A
Bond (D)	26'	18'	468'	11'	40	45	24	25	24	N/A
AB or BC or CD	26'	35'	910'	11'	80	90	48	40	56	N/A
ABC or BCD	26'	53'	1378'	11'	110	140	72	56	88	N/A
Ernst Mahler	26'	12'	312'	8'	N/A	N/A	N/A	12	N/A	N/A
Kimberly Boardroom	26'	12'	312'	8'	N/A	N/A	N/A	12	N/A	N/A
Clark Boardroom	26'	12'	312'	8'	N/A	N/A	N/A	12	N/A	N/A
Lawrence Room	37'	36'	1332'	11'	90	120	80	36	35	7
Evergreen Room	42'	44'	1848'	8'	150	180	108	40	54	9
Hickory Room	27'	20'	540'	9'	40	50	28	25	24	N/A
Redwood Room	56'	20'	1120'	9'	80	100	68	40	40	N/A
Empire Room	77'	65'	5005'	11'6"	400	550	300	N/A	N/A	30
Cortland	29'	25'	725'	12'	50	75	40	32	30	N/A
McIntosh	48'	26'	1237'	12'	90	115	64	56	38	N/A
Pippin	48'	26'	1237'	12'	90	115	64	56	38	N/A
Crimson	36'	27'	972'	11'	70	90	52	40	32	N/A
Aspen	40'	20'	800'	8'	50	80	40	25	N/A	N/A
Executive Boardroom	21'	10'	210'	7'11"	N/A	N/A	N/A	10	N/A	N/A

MAIN FLOOR LAYOUT



Notes



meet | stay | shop | play

www.foxcities.org 1-800-236-6338



meet | stay | shop | play

www.foxcities.org 1-800-236-6338